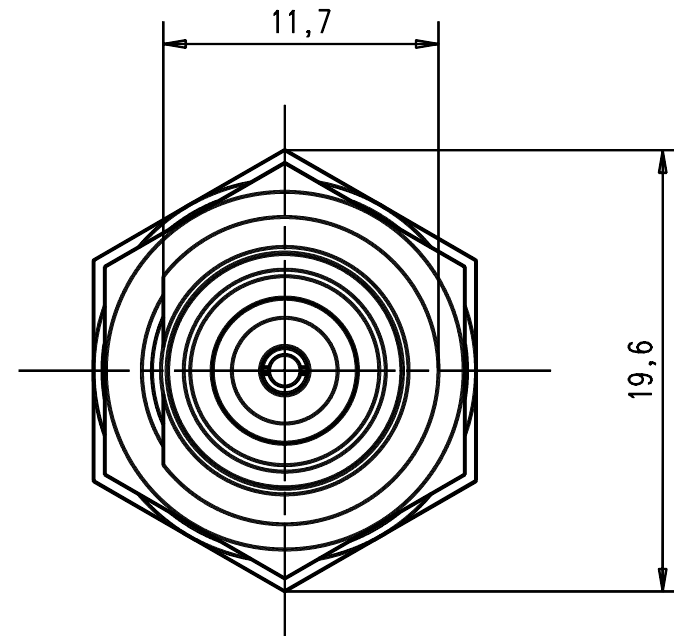
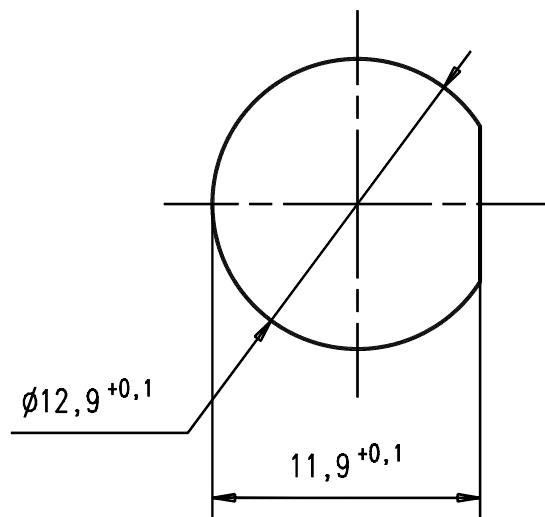


M/scale 1:1

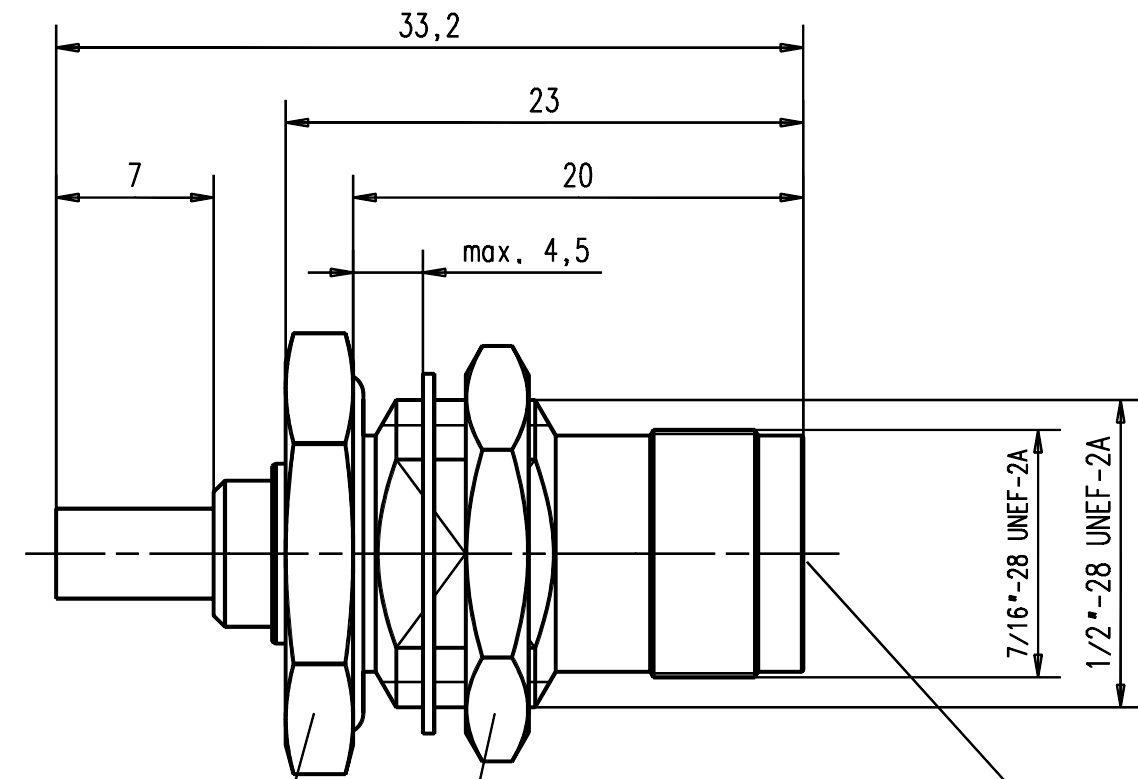
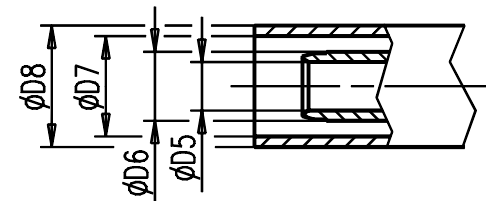
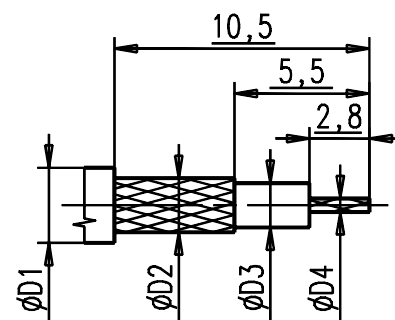


Montagedurchbruch
Panel cut-out



Spritzwasserdicht
Splash water proofed

Kabelzuschnitt
Stripping dimension



SW / WA 16
Anzugsmoment /
tightening torque
max. 20Nm

SW / WA 17

Steckbereich nach /
mating area acc. to
IEC 169-17

Gr.	Fuer Kabel / For cable Type Typ	$\phi D1$ max.	$\phi D2$ max.	$\phi D3$ max.	$\phi D4$ max.	$\phi D5$	$\phi D6$	$\phi D7$	$\phi D8$	Crimp Aussen/out	Crimp Innen/in
1	RG 178 BU;RG 196 AU;	2,10	1,30	0,90	0,30	1,15	1,70	2,50	4,00	3,25	0,70
2	RG 174 BU;RG 316 U;	2,80	2,20	1,67	0,54	1,70	2,30	3,00	4,00	3,25	0,70
3											
4											
5	RG 316 U-d;	3,10	2,50	1,55	0,54	1,70	2,30	3,30	4,00	3,25	0,70

					general tolerance ISO 2768 mH		scale: 3:1	
							Assembly instruction: M55 Stripping dimension: K1	
154/02	b	Revised	22.11.02	RSc	date	name		
513/97	a	Engl. hinzu	14.11.97	RSc	generate	01.06.92	Schwaer	
					checked			
					Norm			
					30383			
							Kabelbuchse P.C.B.Cable mount jack	
nr.	rev.	alteration	date	name			Rev. b	