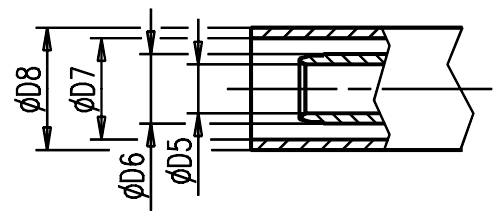
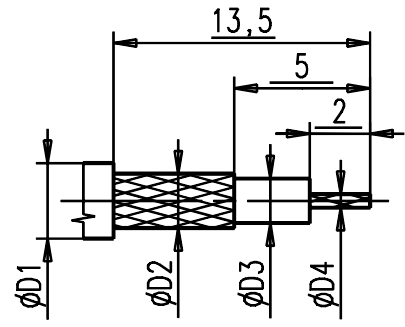
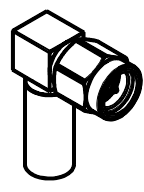


Kabelzuschnitt  
Stripping dimension

M 1:1  
S 1:1



Fuer Kabel /  
For cable

Gr.	Type Typ	$\phi D1$ max.	$\phi D2$ max.	$\phi D3$ max.	$\phi D4$ max.	$\phi D5$	$\phi D6$	$\phi D7$	$\phi D8$	Crimp Aussen/out	Crimp Innen/in
8	RG142B/U, RG223/U, RG400/U	5,40	4,30	2,95	1,00	3,10	4,20	5,65	6,50	5,41	löten/solder

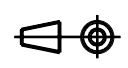


general tolerance  
ISO 2768  
mH

scale: 5:1 (1:1)

Assembly instruction:  
Stripping dimension:

nr.	rev.	alteration	date	name
306/01	b	Neue Ueberwurfmutter	10.05.01	Hogg
542/99	a	$\phi 3,05 \rightarrow \phi 3,10$	13.08.99	RSc



Kabelwinkelstecker  
Angle cable plug

2745.42.1420.08'

Rev.  
b