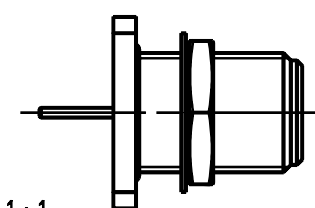
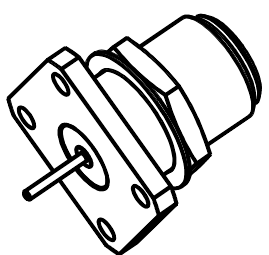
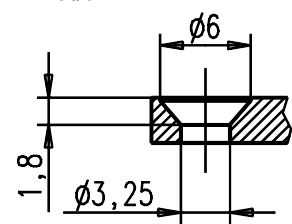


Steckbereich nach IEC 169-16
Mating area acc. to IEC 169-16

SW/AF 19

Dichtring/sealing ring

Schnitt/ cut
AA



IMS CONNECTOR SYSTEMS					general tolerance ISO 2768 mH		scale: 2:1	
					generate 28.08.01		Assembly instruction: Stripping dimension:	
					date	name	Anbaubuchse Mount. jack	
					checked	Mayer		
					Norm		3349.62.2018.19'	
					37025			
							Rev.	
nr.	rev.	alteration	date	name				