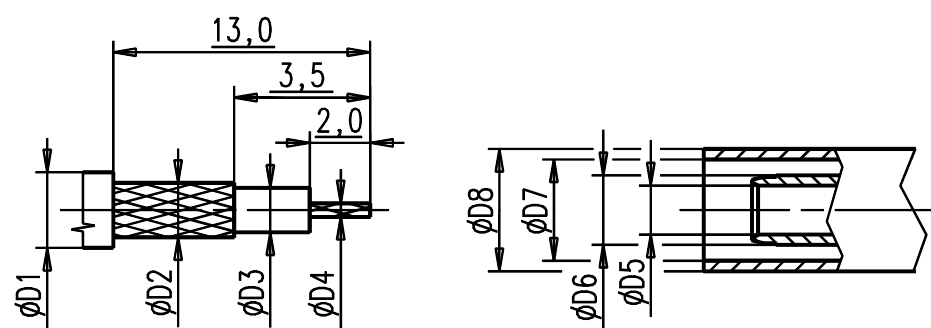
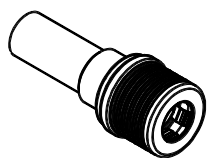


Kabelzuschnitt / Stripping dimension



M/scale 1:1



Fuer Kabel /
For cable

Gr.	Type Typ	$\phi D1$ max.	$\phi D2$ max.	$\phi D3$ max.	$\phi D4$ max.	$\phi D5$	$\phi D6$	$\phi D7$	$\phi D8$	Crimp Aussen/out	Innen/in
8	RG 142 B/U; RG 400 /U	5,00	4,30	2,95	1,00	3,10	4,20	5,65	6,50	5,41	löten/ solder

				general tolerance		scale: 5:1	
				ISO 2768 mH		Assembly instruction: M185	
EC_269_05	b	New push ferrule	07.11.05	RSc	date	name	Kabelstecker Cable mount plug
Design	a	New assembly-no.	01.06.05	RSc	generate	Schwoer	
					checked		
					Norm		3934.QLS.1410.08'
					45412		
							Rev. b
nr.	rev.	alteration	date	name			