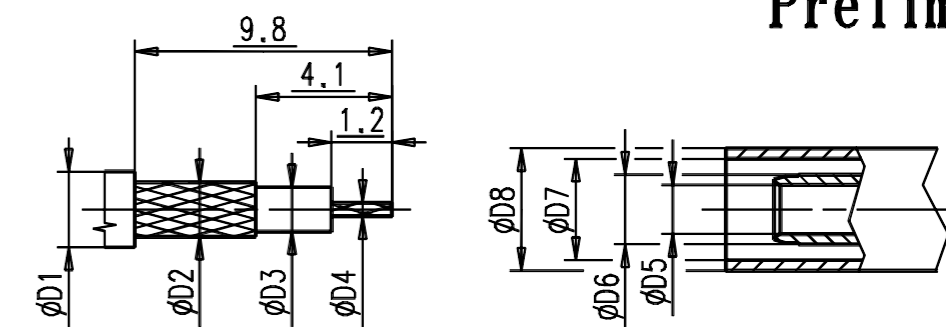


Kabelzuschnitt
Stripping dimension



Confidential
Preliminary

Fuer Kabel /
For cable

Gr.	Type	$\phi D1$ max.	$\phi D2$ max.	$\phi D3$ max.	$\phi D4$ max.	$\phi D5$	$\phi D6$	$\phi D7$	$\phi D8$	Crimp Aussen/out	Solder Innen/in
1											
2	ENVIROFLEX-316	2,52	2,05	1,54	0,54	1,70	2,30	3,00	4,00	3,25	solder
3											
4											
5	ENVIROFLEX-316-D	3,16	2,50	1,54	0,54	1,70	2,30	3,30	4,00	3,25	solder

IMS CONNECTOR
SYSTEMS

general tolerance
ISO 2768
- mH -
date
generate 29.06.06
checked
Norm
47488

scale: 6:1
Assembly instruction:
Stripping dimension:

Kabelwinkelstecker
Cable mount angle plug

4166.93.8914.1''

Rev.

nr. rev. alteration date name