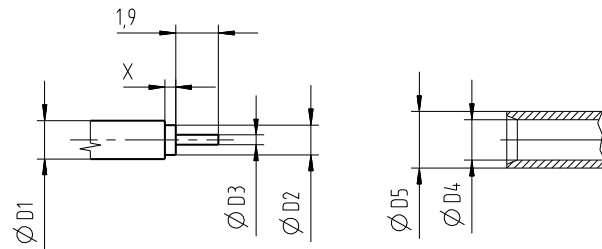
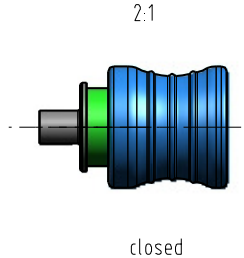
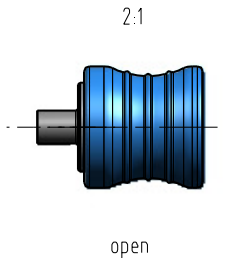
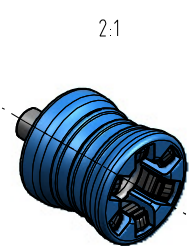
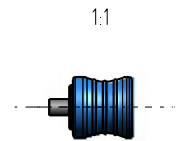


Kabelzuschnitt / stripping dimension



Colour code X	C	D	G
Colour	Capri blue	Bordeaux violet	Silver grey
RAL-No.	5019	4004	7001

Gr.	Typ / type	ØD1	ØD2	ØD3	Anschluss / connecting area		Länge / length X
6	RG405/U	2,20	1,68	0,51	2,25	3,10	0,5
7	RG402/U	3,58	3,00	0,91	3,65	4,50	0,3



		general tolerance		scale: 5:1	
		ISO 2768			
		date	name		QLS(m)-Kabelstecker QLS(m)-Cable mount plug
		25.03.11	Schwaer		
		checked			
		Norm			
		055775			
EC_146_11	c	Add. colour code	20.12.11	RSch	4897.QLS.1X10.0'' Colour code
design	b	Add. cable gr.7	09.06.11	RSch	
design	a	Revised	01.06.11	RSch	
nr.	rev.	alteration	date	name	Rev. c