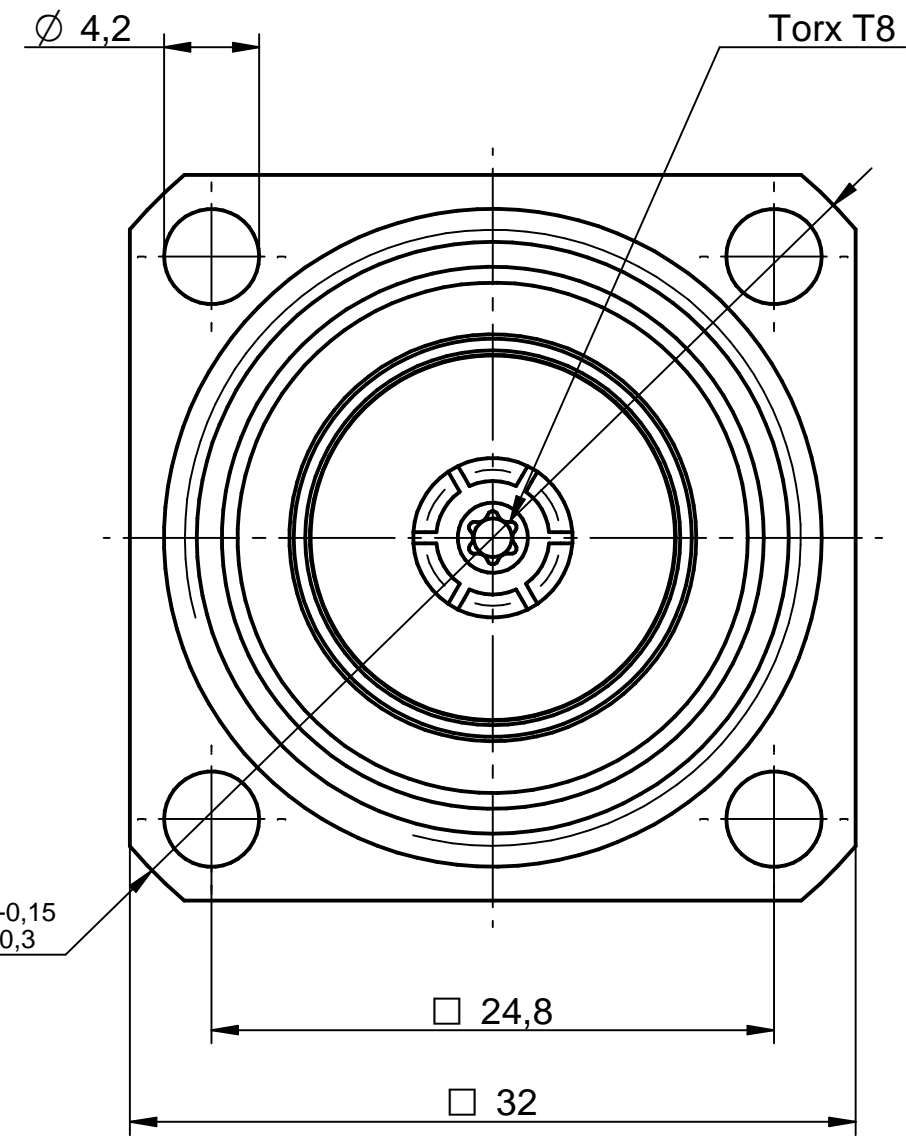
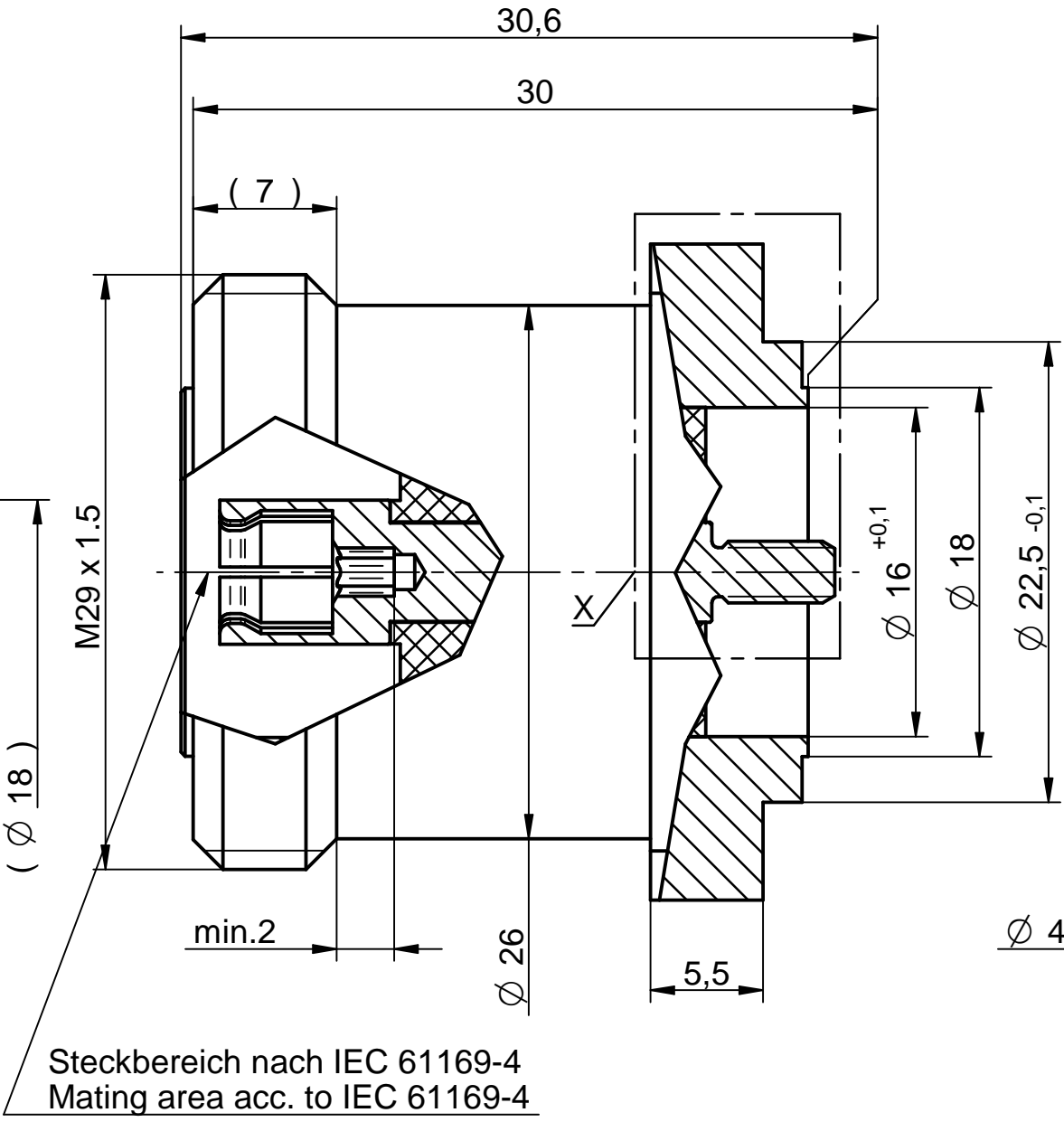
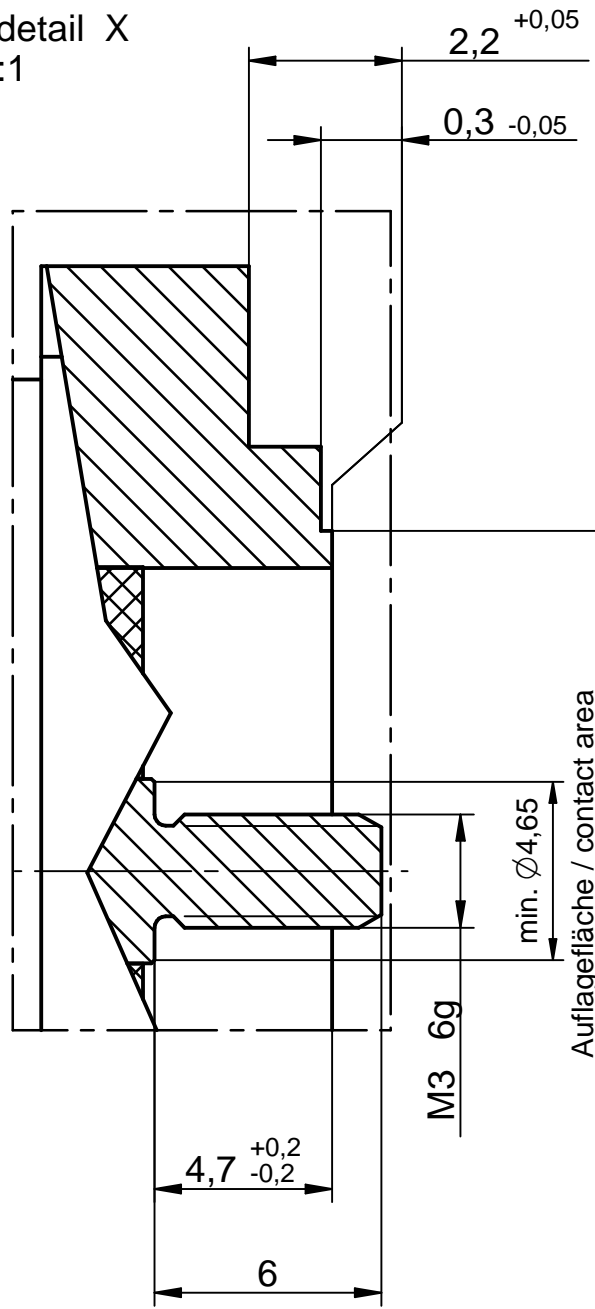


Einzelheit / detail X
M/s 5:1



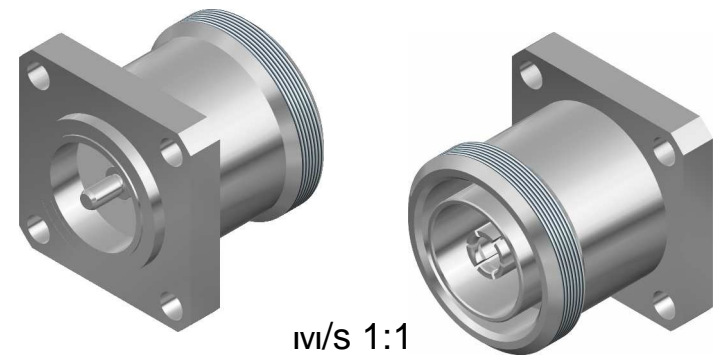
Steckbereich nach IEC 61169-4
Mating area acc. to IEC 61169-4

Along and across sealed IP68

Water pressure 2,5bar ±0,2
Temperature 20°C±0,5°C
Air pressure 2bar
Leakage < 1cm³/min

Längs und quer Dichtigkeit IP68

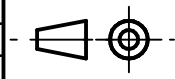
Wasserdruck 2,5bar ±0,2
Temperatur 20°C±0,5°C
Druckluft 2bar
Leckrate < 1cm³/min



m/s 1:1

Part	Material	Surface
Housing	Brass	CuSnZn3
Centre Contact	Bronze	Cu5Ag5
Insulator	PTFE	-
2x Sealing	Silicone rubber	-

IMS CONNECTOR SYSTEMS		general tolerance ISO 2768 fH angle: ±5°	scale: 3:1
		date 31.05.16	name Csenki
		checked	Assembly instruction: Stripping dimension:
		Norm	7/16 Chassisbuchse
			7/16 Bulkhead jack
			5336.08.2018.20'
nr.	rev.	alteration	date
			name



Rev.