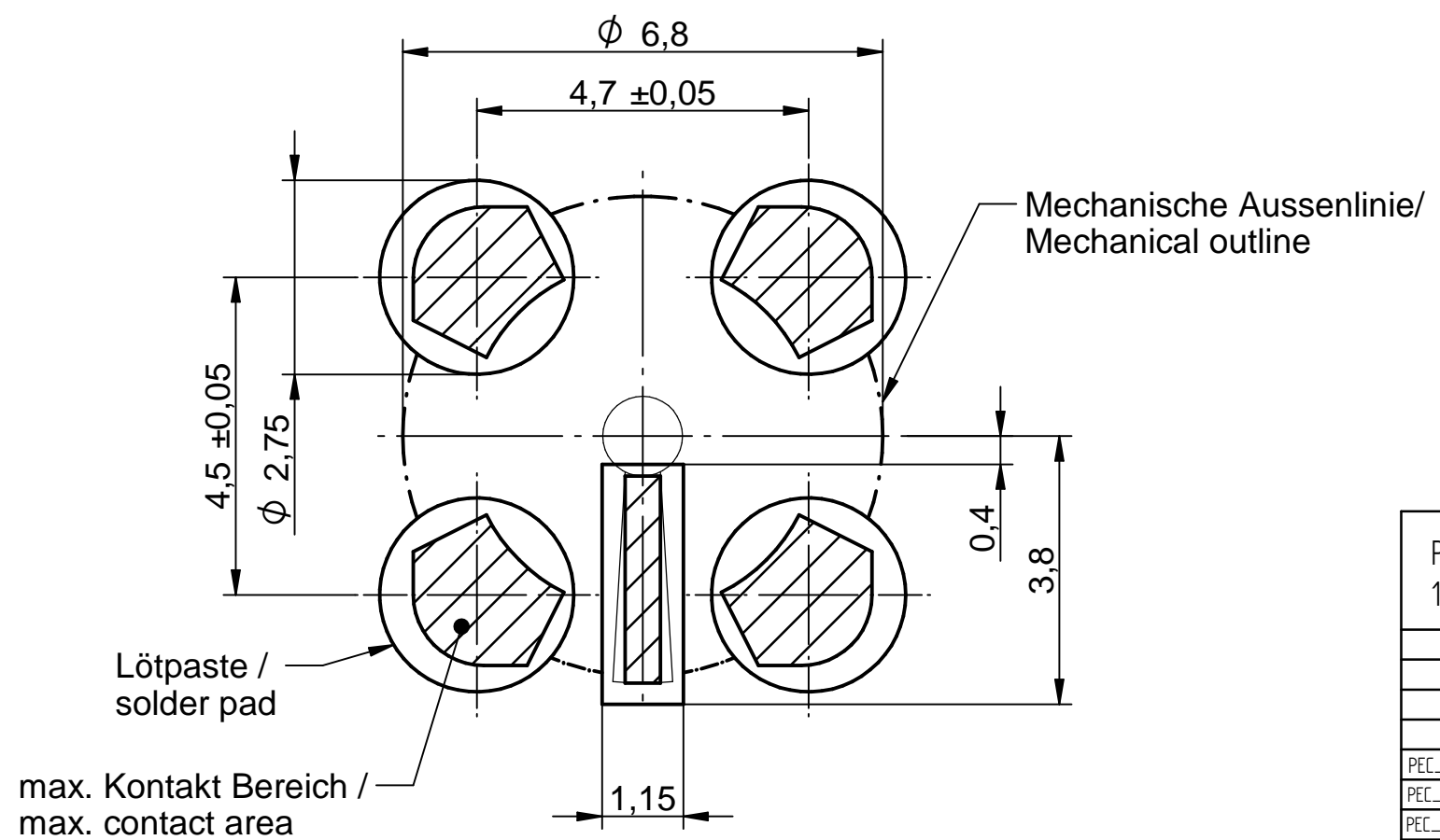
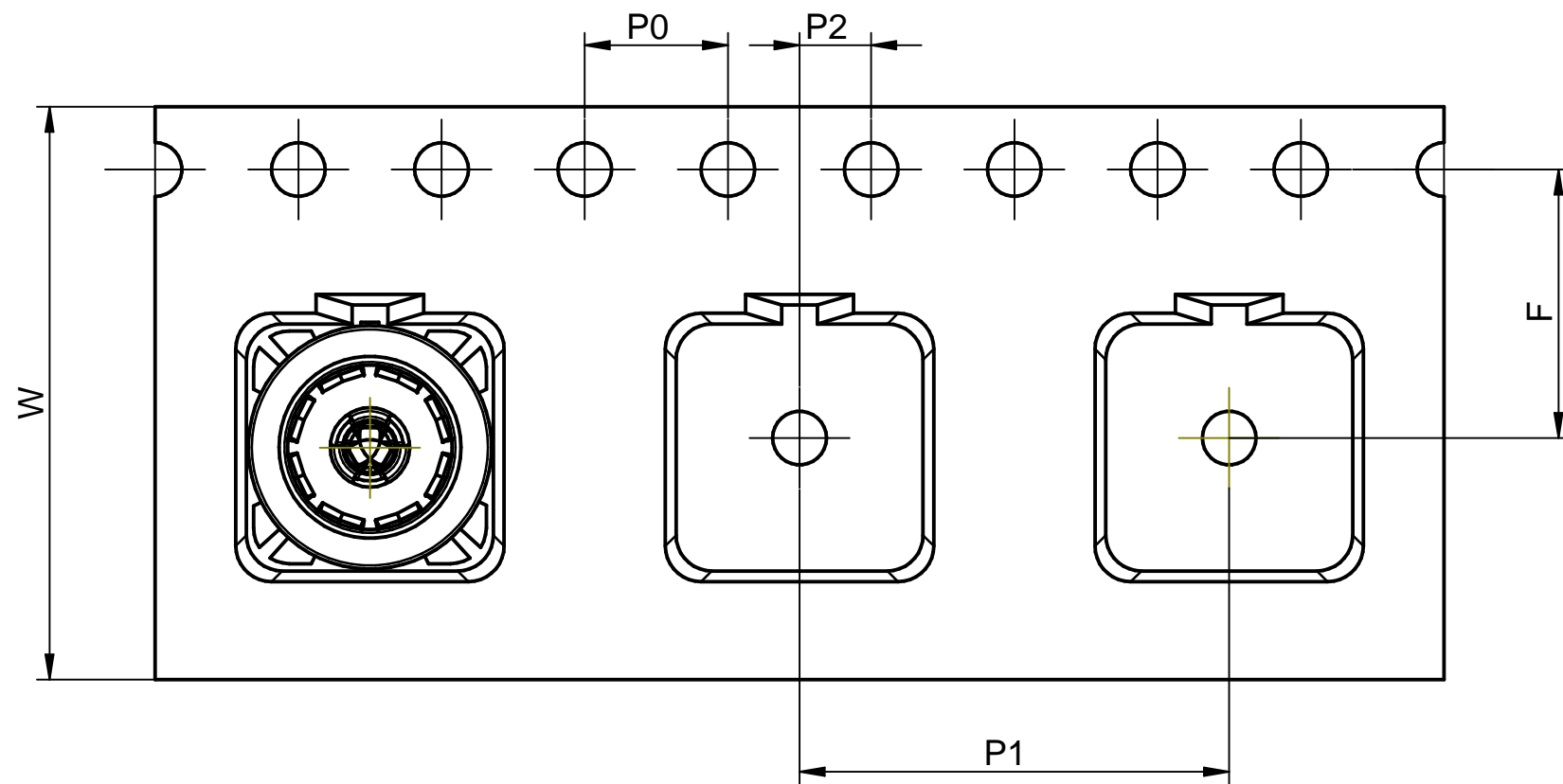


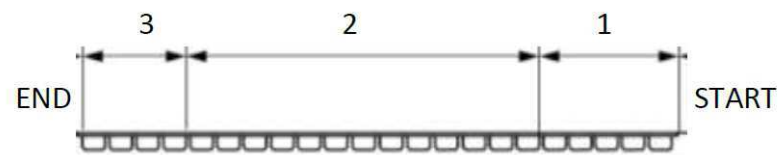
Empfohlenes Leiterplatten-Layout /
Recommended pcb layout



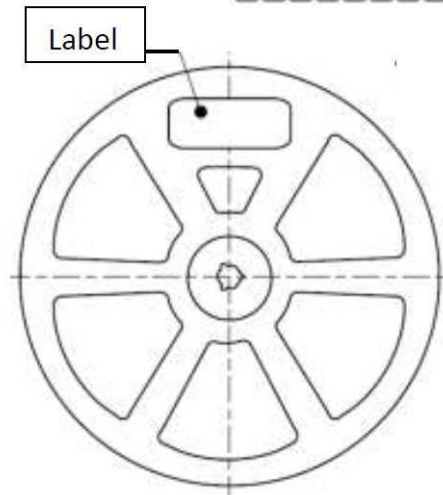
Page 1 / 2	IMS CONNECTOR SYSTEMS		general tolerance ISO2768	scale: 5:1
			date 12.08.2016	name Schwaer
			generate	
			checked	
PEC_11053_13	d	corr. T&R	03.08.20	RSc
PEC_11053_11	c	Page 2 add.	10.10.19	UMa
PEC_11053_08	b	View add.	14.06.19	RSc
PEC_11053_02	a	Add. T&R	11.06.18	RSc
nr.	rev.	alteration	date	name
				VIA(f)-Anbaubuchse VIA(f)-p.c.b. mount jack 5400.VIA.2010.00'
				Rev. d



User Direction of Unreeling
Abwickelrichtung Kunde →



User Direction of Unreeling
Abwickelrichtung Kunde →

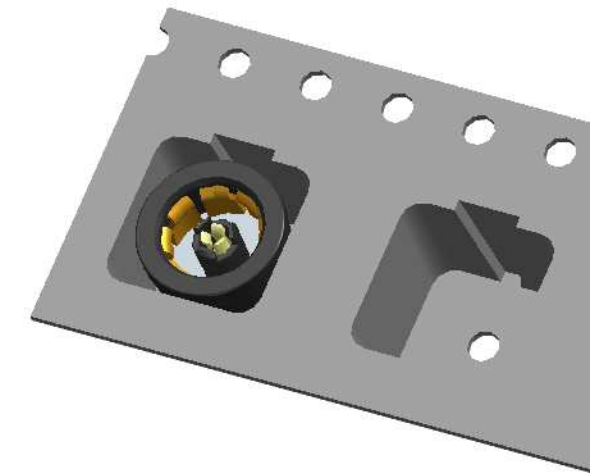


Tape size (W)	P0	P1	P2	F
16	4	12	2	7,5

For more information on the tape and reel drawing: AGK-4756
Für weitere Angaben auf der Blistergurtzeichnung: AGK-4756

Tape and reel	Blistergurt	AGK-4756
Parts/reel (2)	Stck/Gurt (2)	950
Parts/m	Stck/m	83
Forward run (1)	Vorlauf (1)	0,17m
After run (3)	Nachlauf (3)	0,16m
Tape length	Gurtlänge	ca./app. 12m
Reel diameter	Spulendurchmesser	330mm

T&R packaging is in accordance with EIA-481D and IEC-60286-3
T&R Verpackung nach EIA-481D and IEC-60286-3



3:1

Surface resistance Max. value 10 Ohm
should not be charged up to more than 100 V.

Oberflächenwiderstand Max. 10 Ohm Material
Material sollte nicht mehr als 100 V aufgeladen werden.

All cavity dimensions measured at the end of radius.
Kavitätenmasse am Radiusauslauf gemessen.

Page 2 / 2	IMS CONNECTOR SYSTEMS		Bevel 3° ±3° Inner radius R0,3 max.	scale: 5:1
			date 12.08.2016	name Schwaer
			generate	
			checked	
PEC_11053_13	d	corr. T&R	03.08.20	RSc
PEC_11053_11	c	Page 2 add.	10.10.19	UMa
PEC_11053_08	b	View add.	14.06.19	RSc
PEC_11053_02	a	Add. T&R	11.06.18	RSc
nr.	rev.	alteration	date	name
				VIA(f)-Anbaubuchse VIA(f)-p.c.b. mount jack 5400.VIA.2010.00'
				Rev. d