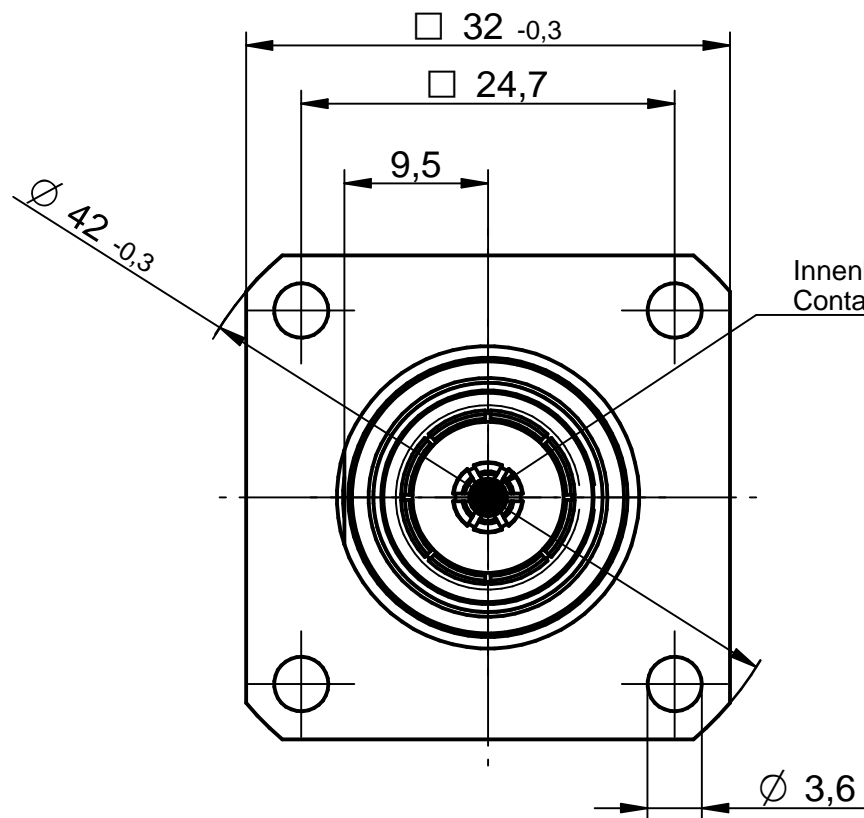


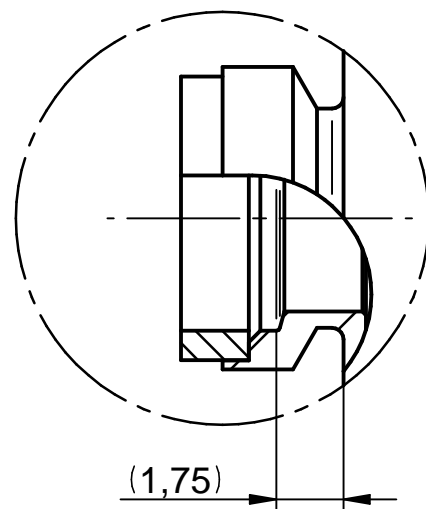
M/s 1:1

M/s 2:1

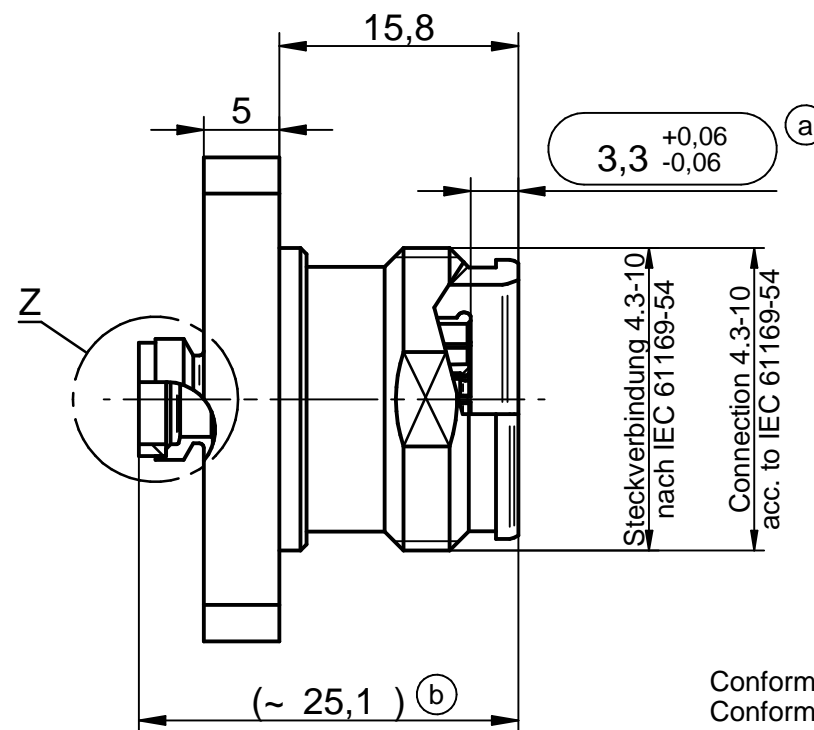


Innenbuchse Laser markiert!
Contact socket Laser marked!

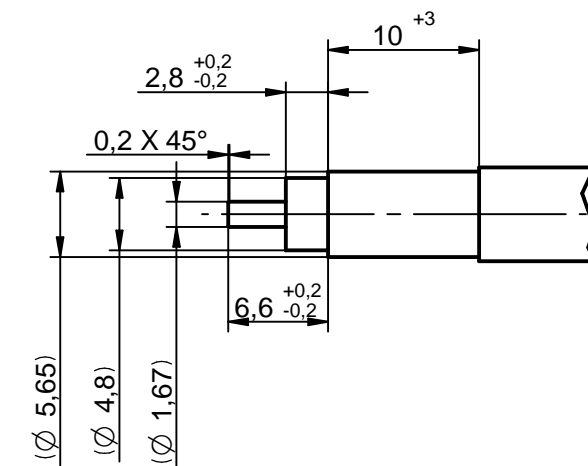
Einzelheit / detail Z
M/s 5:1



Gehäuse Laser markiert
und Positioniert zur Fläche!
Housing Laser marked and
in position to area!



Conformable Koaxialkabel Typ 216, 50 Ω
Conformable Coaxial Cable, Type 216, 50 Ω



					general tolerance ISO 2768 mH angle: ±5°		scale: 2:1	
					generate 24.04.17 mcsenki checked 29.06.17 Pölz Norm		Assembly instruction: Stripping dimension: 4.3/10-Flanschbuchse 4.3/10-Flange mount cable jack	
PEC_11243_01	b	solder part changed	29.06.17	mcsenki		5423.VDZ.2818.08'		Rev. b
EC_088_17	a	revised	21.06.17	mcsenki		surface code		
nr.	rev.	alteration	date	name				