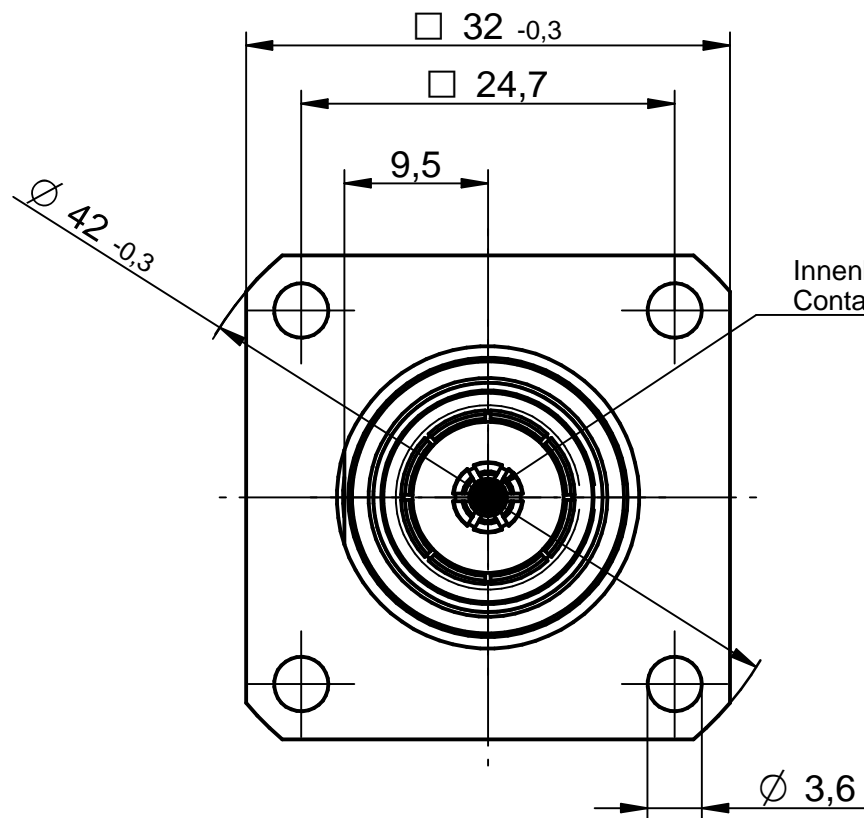
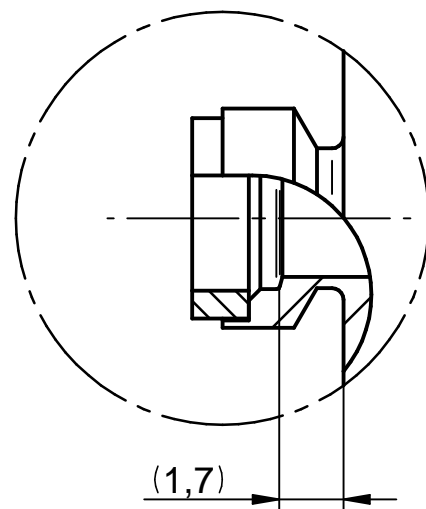


M/s 1:1

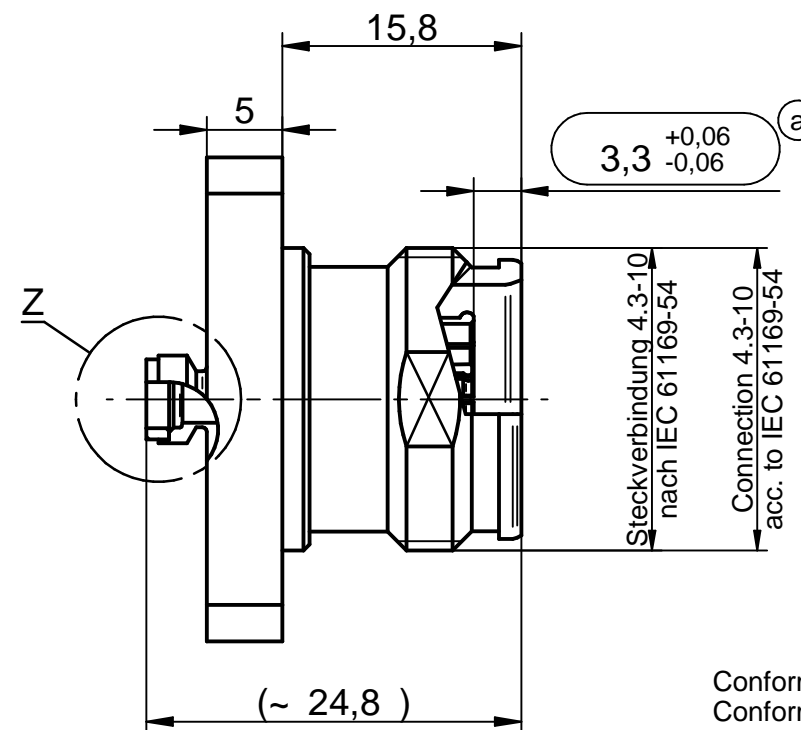
M/s 2:1



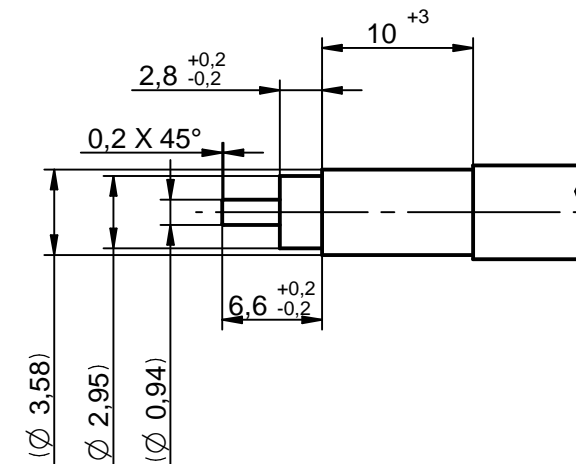
Einzelheit / detail Z
M/s 5:1



Gehäuse Laser markiert
und Positioniert zur Fläche!
Housing Laser marked and
in position to area!



Conformable Koaxialkabel Typ 141, 50 Ω
Conformable Coaxial Cable, Type 141, 50 Ω



					general tolerance	scale: 2:1		
					ISO 2768 mH angle: ±5°	Assembly instruction: Stripping dimension:		
			date	name	4.3/10-Flanschbuchse			
			generate	24.04.17				mcsenki
			checked	29.06.17				Pölz
			Norm			4.3/10-Flange mount cable jack		
PEC_11244_02	c	revised	25.09.17	Pölz		5424.VDZ.2818.07'		Rev.
PEC_11244_01	b	solder part changed	29.06.17	mcsenki				c
EC_088_17	a	revised	21.06.17	mcsenki				
nr.	rev.	alteration	date	name	surface code			