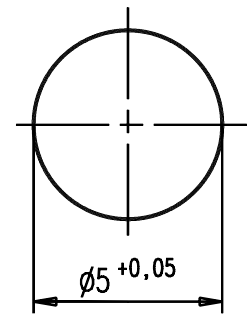
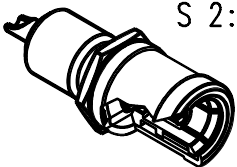


- 1) Steckkraft mit Stecker 93.1222.22'
Engagement force with plug 93.1222.22'
max. 45N
- 2) Abzugskraft mit Stecker 93.1222.22'
Separation force with plug 93.1222.22'
min. 5N

Montagebohrung/Mounting hole
(Panel-thickness max. 3mm)



M 2:1
S 2:1



				general tolerance ISO 2768 mH	scale: 5:1	
					Assembly instruction: Stripping dimension:	
					date	name
				generate	22.11.91	Zech
				checked		
				Norm		
				31439		
409/02	c	Schnitt hinzu	05.06.02	Hogg	Einbaubuchse p.c.b. mount jack	
397/02	b	Kraft korr.	29.05.02	Hogg		
243/95	a	Zeichnung korr.	09.01.96	I.S.		
nr.	rev.	alteration	date	name		