

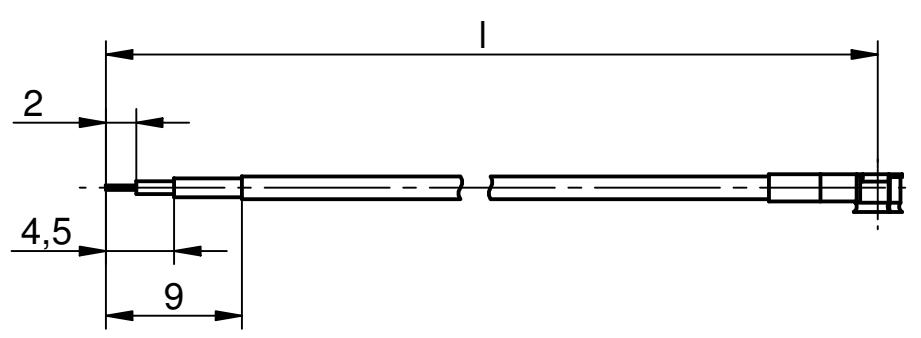
Pos.	Stk./ pcs	Bezeichnung/ Description	Typ-Nr./ Type-No.	Bemerkung/ Remark
①	1	Kabelbuchse Cable mount jack	307.23.2415.411 (1071058)	
②				
③	1	Kabel Cable	siehe Tabelle rechts! see chart on the right side!	
④	1	Schrumpfschlauch Heat shrink tube	3/1mm schwarz / black (1138480)	
⑤				
⑥				
⑦				

Pos.	Stk. pcs.	Kabel cable	Kabeltyp cable type	Art. Nr. IMS Part.No. IMS	Zuschnittsl. cut length	Länge L length L
③	0,5	K-2632-01	Hirose H.FL-2LP-111- A-600 Cable diameter: 1,48mm	(1134033)	290 <sup>+5</sup> <sub>-5</sub>	300 <sup>+15</sup> <sub>-10</sub>

Anzahl der Kabel / No. of cable	Stueck / Pcs

Kabelzuschnitt / Stripping dimension Kabelzuschnitt / Stripping dimension

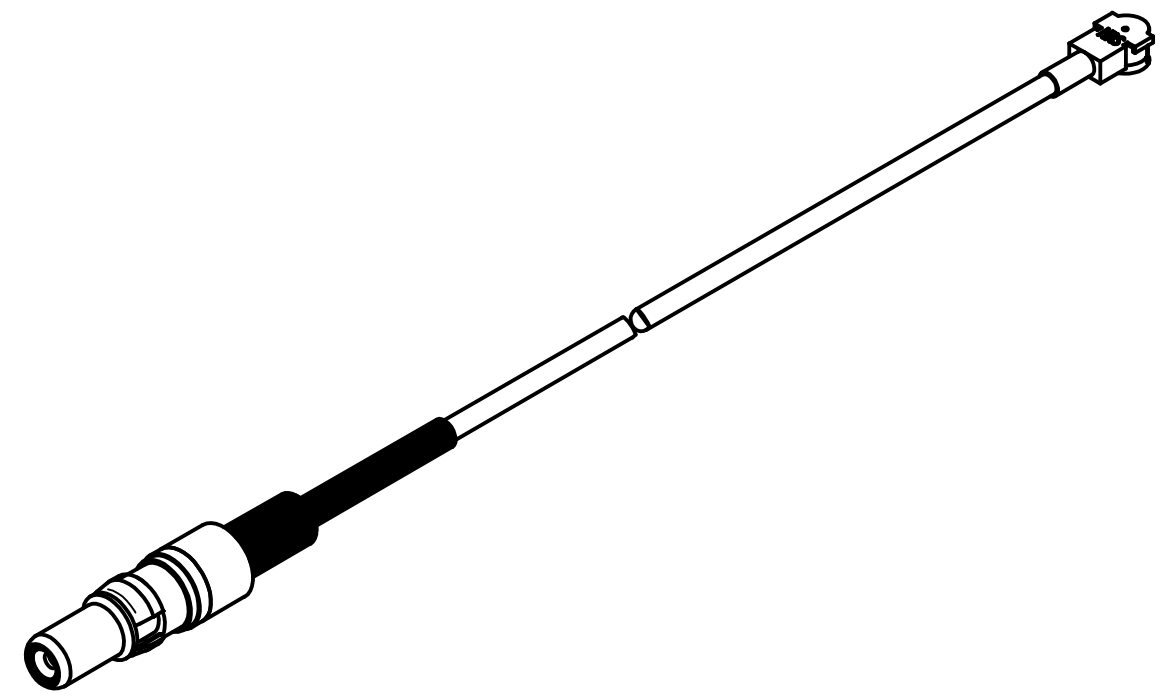
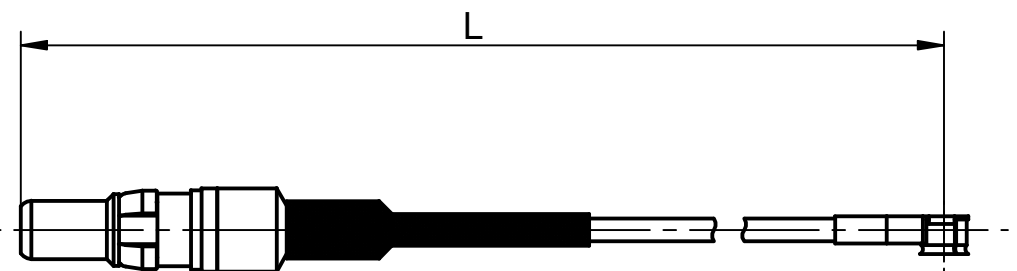
Bemerkungen/ Remarks



Pos.1 M6  
Aussen/outer: crimp OSW 2,67  
Innen / inner : löten / solder

Pos.2  
Aussen/outer:  
Innen / inner :

Prüfspannung: 500Veff/50Hz  
Test voltage : 500Veff/50Hz



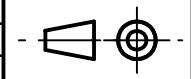
general tolerance  
~~ISO 2768~~  
AA-CS-12

scale: 2:1

date	name
generate 04.09.09	Pözl
checked	
Norm	

HF-Leitung flexibel  
RF flexible cable assembly

design nr.	a rev.	text ergänzt alteration	29.09.09 date	Pözl name
------------	--------	-------------------------	---------------	-----------



K-2632-XX

Rev.  
a