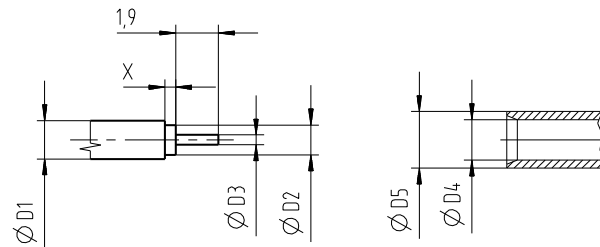
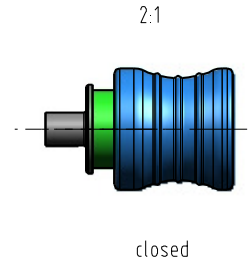
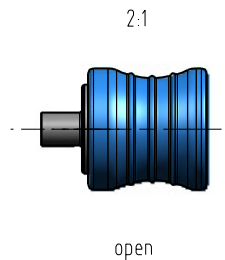
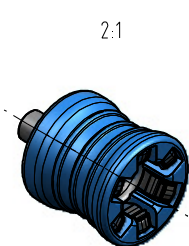
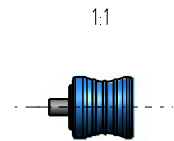


Kabelzuschnitt / stripping dimension



Colour code X	C	D	G
Colour	Capri blue	Bordeaux violet	Silver grey
RAL-No.	5019	4004	7001

Gr.	Typ / type	Anschluss / connecting area					Länge / length X
		ØD1	ØD2	ØD3	ØD4	ØD5	
6	RG405/U	2,20	1,68	0,51	2,25	3,10	0,5
7	RG402/U	3,58	3,00	0,91	3,65	4,50	0,3



		general tolerance		scale: 5:1	
		ISO 2768			
		date		name	
		25.03.11		Schwaer	
		checked			
		Norm			
		055775			
EC_146_11	c	Add. colour code	20.12.11	RSch	<b>QLS(m)-Kabelstecker</b> <b>QLS(m)-Cable mount plug</b>
design	b	Add. cable gr.7	09.06.11	RSch	
design	a	Revised	01.06.11	RSch	
nr.	rev.	alteration	date	name	<b>4897.QLS.1X10.0''</b>
					Rev. c
					Colour code